

Hilton[®]
ANAHEIM

Grounds for greatness

Function Space Guide



The OC's largest & most eventful hotel

Built to bring people together and backed by four decades of celebration, Hilton Anaheim is where big moments become larger than life. Originally opened for the 1984 Olympics, our expansive property is purposefully designed for great gatherings and newly renovated to inspire great things to come.

With award-winning meeting and event services, 1,574 guest rooms and suites, and 150,000 square feet of indoor and outdoor venues adjacent to Anaheim Convention Center, you'll find grounds for connection alongside every convenience. Our team is here to help with curated itineraries, experience enhancements, and local insights that immerse your guests in our city's ever-growing promise. Discover the skill, scale, and settings to energize your event at Hilton Anaheim.



AT ANAHEIM'S CENTER OF ATTRACTION

Next to the convention center and one mile from Downtown Disney District & Disneyland® Resort, our certified Good Neighbor Hotel is in a safe, well-kept area at the city's enduring frontier. Convenient walkability and a perfect Transit Score® make it the ideal hub for exploring local entertainment and enrichment. And with five major airports in reach, travel is easy.

CREATIVE CATERING AT SCALE

Our culinary team specializes in developing and preparing inspired seasonal menus for up to 3,500 guests. Full of flavor and made with the region's finest organic ingredients, our team's imaginative cuisine can be found beyond banquets at our dining destinations and private Chef's Table experience.

CUSTOM EVENTS, EXPERT SUPPORT

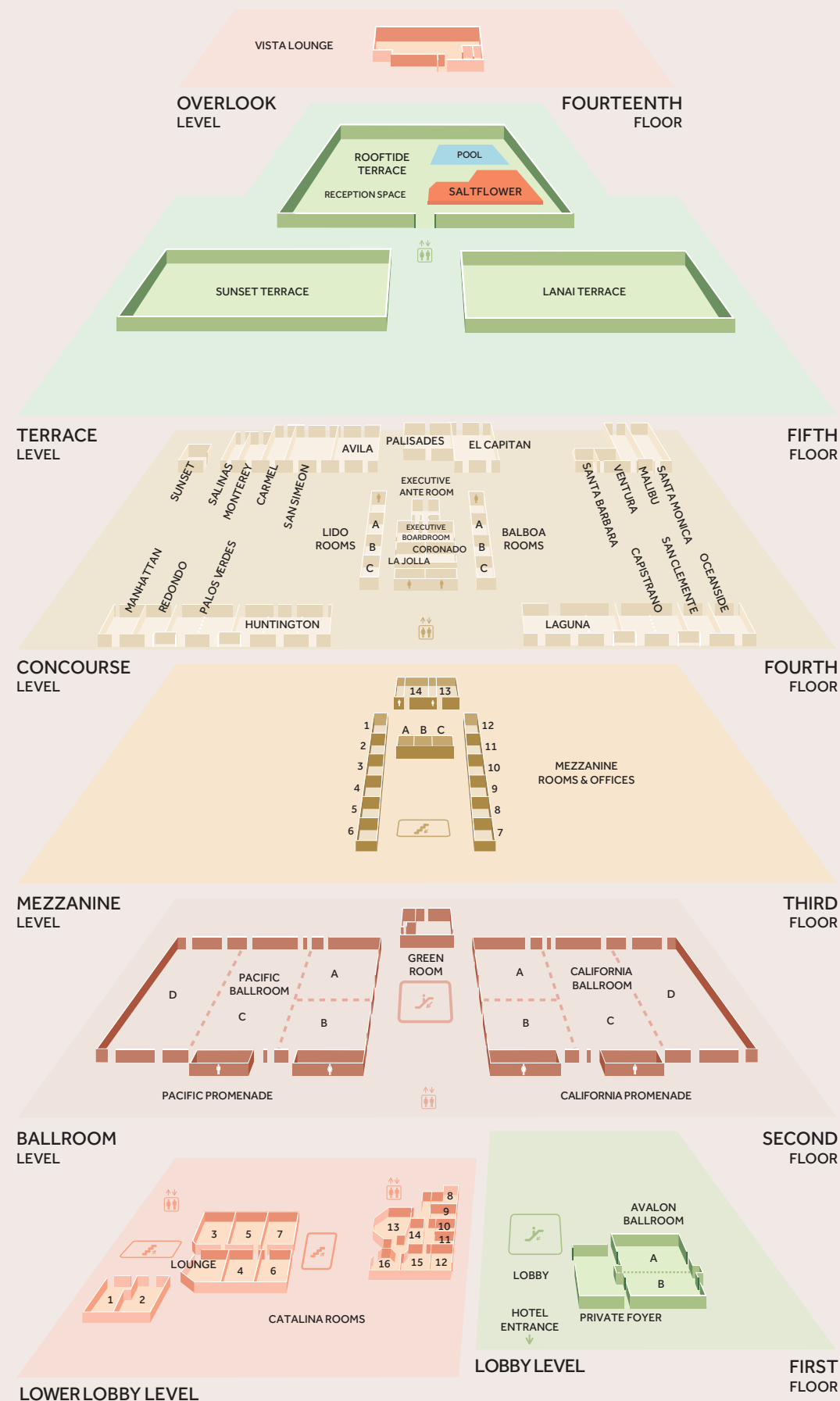
With turnkey packages, expansive customization, and a highly seasoned team to deliver it all, meetings and events at Hilton Anaheim are effortless for you and extraordinary for your guests. Property-wide event signage, dynamic installations, and tailored touches translate to outsized potential for experiences and activations that make an impression.

AMENITIES IN ABUNDANCE

Comfort and convenience await guests at every turn. Guest rooms and suites brim with SoCal sophistication, some revealing nightly fireworks, while upgrades enhance the experience for VIPs. Seven dining options span California cuisine, grab-and-go, and Starbucks® cafe. Our vibrant lobby, outdoor pool, fitness center, and salon invite revitalization, while valet, self-parking, EV charging, and car rental add ease.

The space to inspire

At Hilton Anaheim, expansive and newly renovated grounds, diverse indoor and outdoor settings, and expertly composed event packaging make way for whatever you envision. Featuring form, flexibility, and function, our venues are designed to offer limitless potential for events of all shapes and sizes, from creative receptions to citywide conventions.



LOWER LOBBY

Our Catalina Training Center provides a distraction-free setting for small- to mid-sized training and collaborative workshops.

CONCOURSE LEVEL

An extensive series of rooms, our Concourse Training Center scales to serve a wide range of events, from small group sessions to midsized seminars.

LOBBY LEVEL

With direct access from our grand lobby, Avalon Ballroom is a versatile venue for intimate dinners, receptions, and celebrations.

TERRACE LEVEL

Our twin Sunset & Lanai Terraces are stunning open-air settings for special events, while our Rooftide Terrace is fit for small-scale activations and gatherings.

BALLROOM LEVEL

Our twin Pacific & California Ballrooms are purpose-built for large conferences, tradeshows, and large-scale events.

OVERLOOK LEVEL

The top-floor Vista Lounge is a scenic venue for exclusive networking events, intimate celebrations, and other milestones.

MEZZANINE LEVEL

Our Mezzanine Training Center offers meeting rooms and offices for in-depth workshops, intimate trainings, and strategic huddles.

Lower Lobby Level

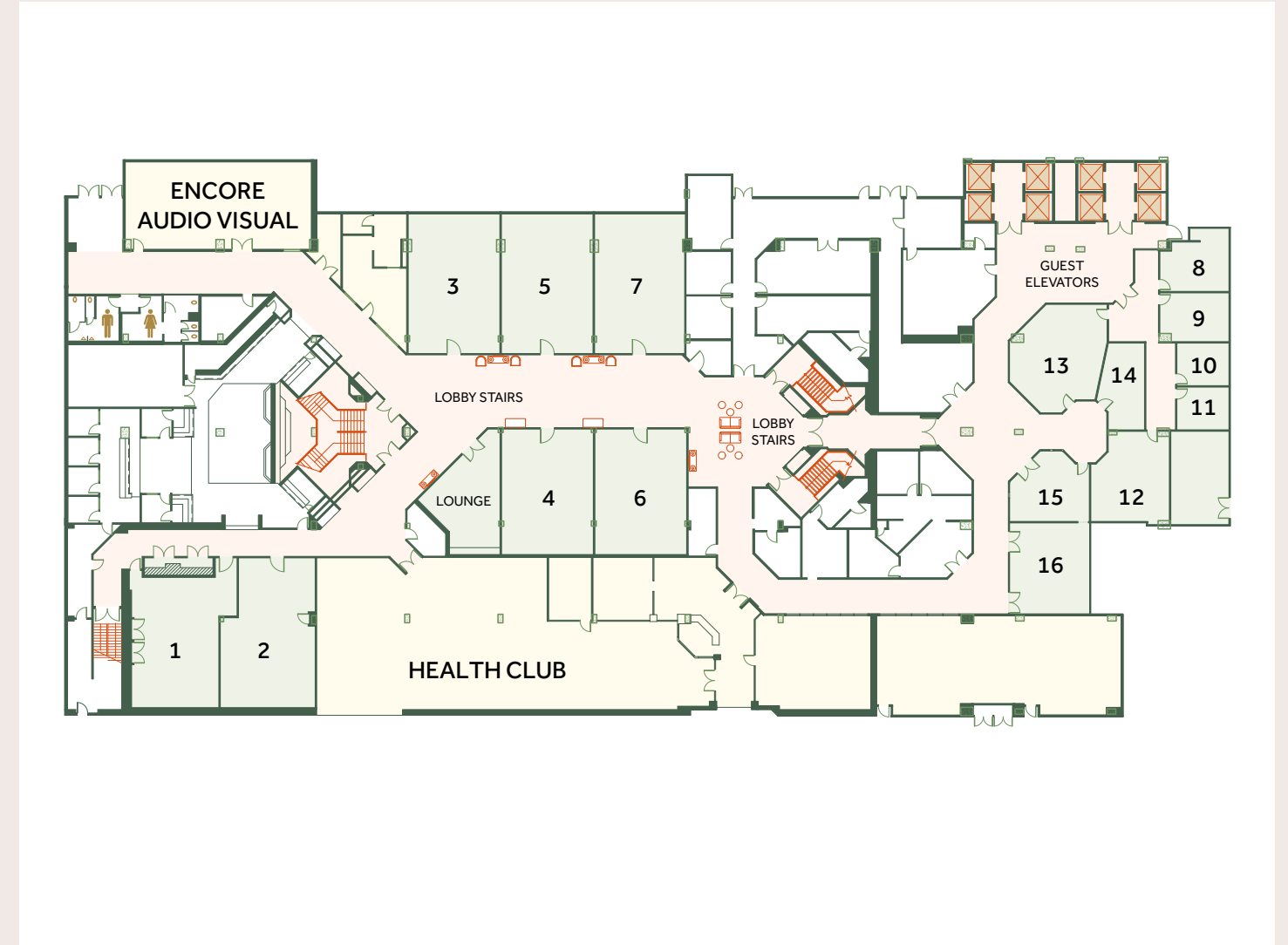
Catalina Training Center

16 MEETING ROOMS | FOYER & LOUNGE | 10-80 GUESTS PER ROOM

Tucked in the quiet calm of our lower lobby, an enclave of meeting rooms presents a distraction-free setting for small- to medium-sized groups—a sanctuary for collaborative focus and flow. A central 400-square-foot lounge offers a distinct setting for food and beverage breaks throughout the day, while a neutral palette, organic shapes, and soft lighting create ambiance across it all, fostering creativity and exchange.



Scan for a 3D walkthrough of the training center.



ROOM	DIMENSIONS L X W	SQUARE FEET	CEILING HEIGHT	THEATRE	CLASS ROOM 2/6'	CLASS ROOM 3/6'	10/72" ROUNDS	RECEPTION	U-SHAPE	CONFERENCE	HOLLOW SQUARE
Catalina 1	24x38	970	9'	60	28	40	50	100	28	26	30
Catalina 2	22x43	990	9'	60	28	40	40	100	28	26	30
Catalina 3	37x27	1000	9'	70	28	40	50	100	28	26	30
Catalina 4	37x27	1000	9'	70	28	40	50	100	28	26	30
Catalina 5	38x27	1026	9'	80	30	45	50	100	28	26	30
Catalina 6	38x27	1026	9'	80	30	45	50	100	28	26	30
Catalina 7	38x27	1026	9'	80	30	45	50	100	28	26	30
Catalina 8	15x17	255	10	20	12	-	10	20	12	10	14
Catalina 9	15x13	195	10	18	12	-	10	20	12	10	14
Catalina 10	11x14	154	8	12	-	-	10	-	-	10	-
Catalina 11	11x14	154	8	12	-	-	10	-	-	10	-
Catalina 12	17x22	374	8	40	15	-	30	40	12	20	16
Catalina 13	14x30	420	8'6"	40	15	-	30	40	16	20	18
Catalina 14	19x19	361	8'6"	30	12	-	20	30	14	12	16
Catalina 15	16x22	352	8	25	12	-	20	25	14	12	16
Catalina 16	11x14	154	8	12	-	-	10	15	-	10	-
Catalina Lounge		400	9'	25	-	-	-	25	20	18	16

Lobby Level | First Floor

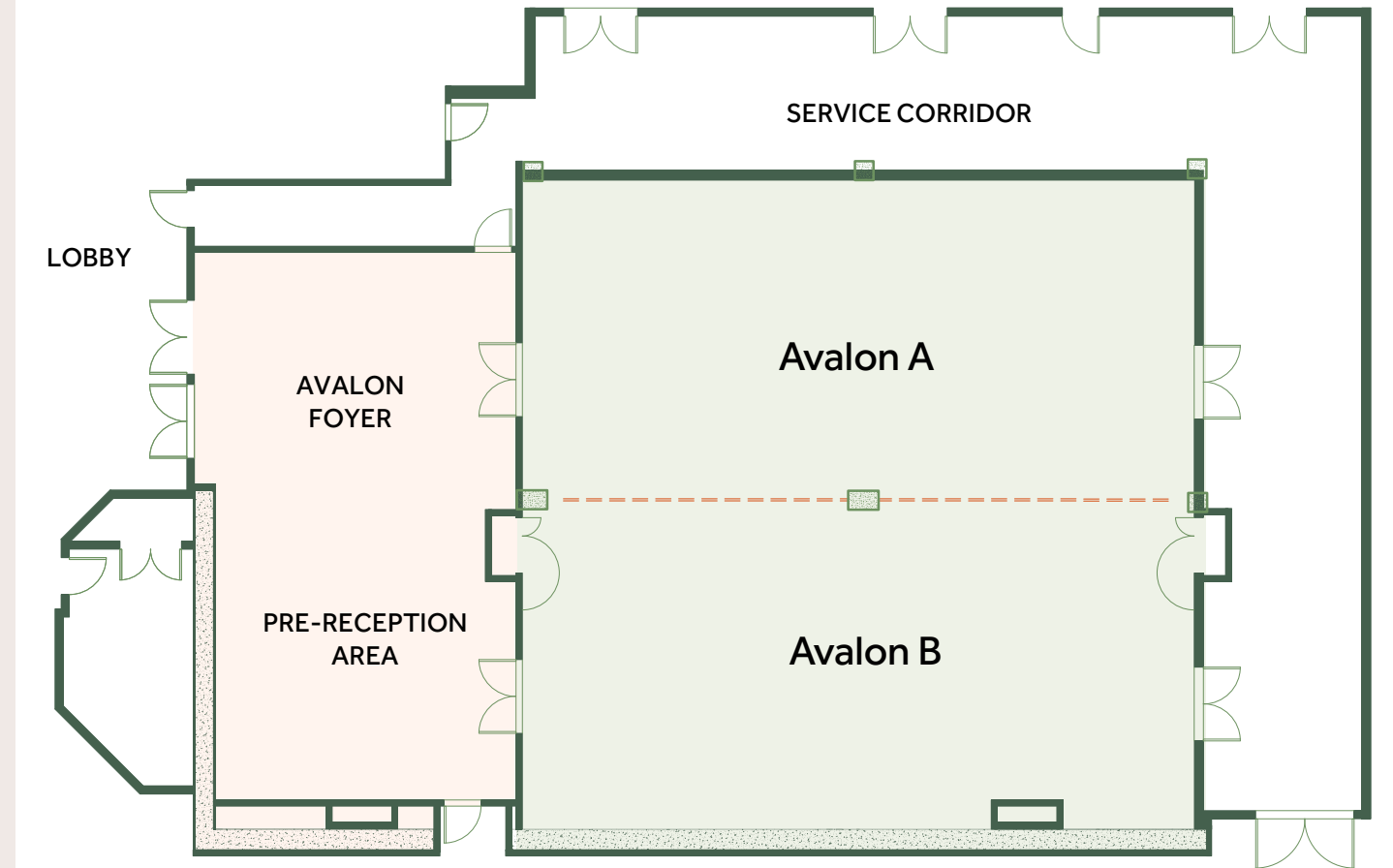
Avalon Ballroom

2,496 SQ FT | PRIVATE FOYER | UP TO 240 GUESTS

Positioned in a prime location, adjacent to the hotel entrance with direct access from our grand lobby, our ground-level ballroom blends seamless transitions and timeless sophistication in a versatile venue for small-scale dinners and celebrations. Double doors lead into a private foyer, ideal for a pre-reception welcome drinks and offering a distinct bar setting during your event.



Scan for a 3D walkthrough of the ballroom.



ROOM	DIMENSIONS L X W	SQUARE FEET	CEILING HEIGHT	THEATRE	CLASS ROOM 3/6'	10/72" ROUNDS	RECEPTION	U-SHAPE	CONFERENCE	HOLLOW SQUARE
Avalon	54 x 52	2,496	11'8"	200	150	150	200	-	-	-
Avalon-A	54 x 26	1,248	11'8"	100	70	60	90	36	36	40
Avalon-B	54 x 26	1,248	11'8"	100	70	60	90	36	36	40
Foyer	-	950	11'8"	-	-	-	40	-	-	-

Capacities based on maximum sets; numbers may vary based on the addition of AV, staging, decor, food stations, etc.

Ballroom Level | Second Floor

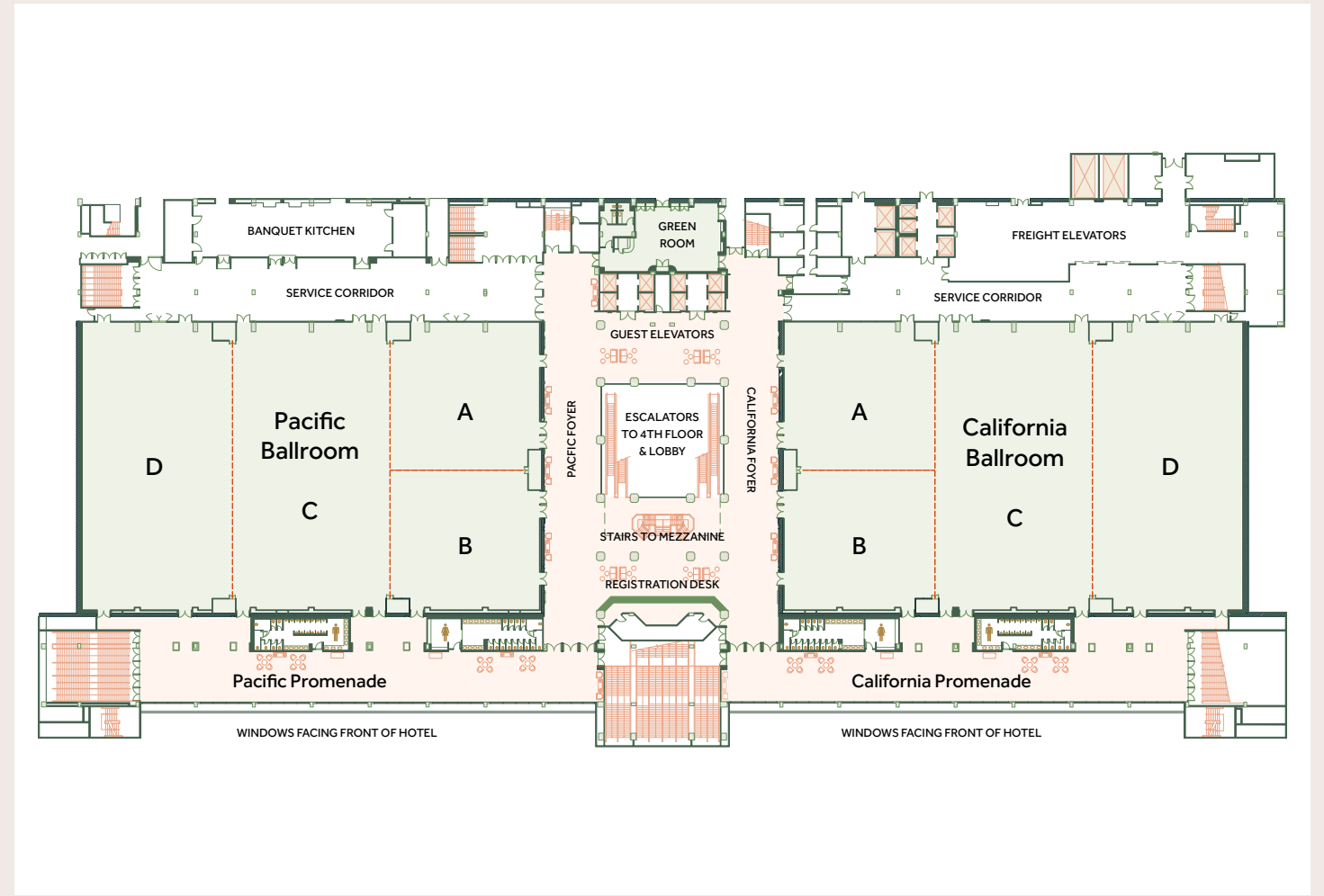
Pacific & California Ballrooms

28,542 SQ FT EACH | FOYER WITH REGISTRATION DESK | PROMENADES & GREEN ROOM
2,800 GUESTS & 176 BOOTHS EACH

Just up the escalators, identical ballrooms span the entire second floor, delivering the space for full-scale immersion and impact. Purpose-built for large conferences and tradeshows, both ballrooms offer sweeping layouts with 19-foot ceilings, promenades flooded with natural light, and a central staging area. An impressive 11,215-square-foot foyer joins the two ballrooms, maximizing flexibility and flow for events that feel larger than life.



Scan for a 3D walkthrough of the ballrooms.



ROOM	DIMENSIONS L X W	SQUARE FEET	CEILING HEIGHT	THEATRE	CLASS ROOM 2/6'	CLASS ROOM 3/6'	12/72" ROUNDS	10/72" ROUNDS	RECEPTION	U-SHAPE	CONFERENCE	HOLLOW SQUARE
California	213x134	28,542	20'	2,600	950	1,300	2,040	1,700	2,500	-	-	-
California-A	70x69	4,830	20'	400	150	240	300	250	400	60	52	68
California-B	70x65	4,550	20'	400	150	240	300	250	400	60	52	68
California-C	73x134	9,782	20'	750	288	450	540	540	800	105	-	-
California-D	70x134	9,380	20'	750	288	450	540	540	800	105	-	126
Pacific	213x134	28,542	20'	2,600	950	1,300	2,040	1,700	2,500	-	-	-
Pacific-A	70x69	4,830	20'	400	150	240	240	250	400	60	52	68
Pacific-B	70x65	4,550	20'	400	150	240	240	250	400	60	52	68
Pacific-C	73x134	9,782	20'	750	288	450	540	540	800	105	-	-
Pacific-D	70x134	9,380	20'	750	288	450	540	540	800	105	-	126
Foyer	181x109	11,215	8'6"	-	-	-	-	-	500	-	-	-
Green Room	49x30	1,450	8'	-	-	-	48	40	75	-	18	-
Promenade	209x22'6"	4,600	13'	-	-	-	-	-	600	-	-	-

EXHIBIT SPACE	BOOTHS 8 X 10	BOOTHS 10 X 10	FLOOR SURFACE	FLOOR LOAD LBS./SQ.FT	LIGHTING
Pacific & California Ballrooms (each)	176	140	Carpet	100 lbs.	Recessed
Pacific & California-A (each)	28	22	Carpet	100 lbs.	Recessed
Pacific & California-B (each)	27	23	Carpet	100 lbs.	Recessed
Pacific & California-C (each)	65	40	Carpet	100 lbs.	Recessed
Pacific & California-D (each)	56	38	Carpet	100 lbs.	Recessed
Promenades (each)	17	-	Carpet	100 lbs.	Recessed

Capacities based on maximum sets; numbers may vary based on the addition of AV, staging, decor, food stations, etc. 820' x 15' electric drop-down screens centered on West and North walls of A, C and D. Water/drain located on the East wall in California D and the West wall in Pacific D.

Mezzanine Level | Third Floor

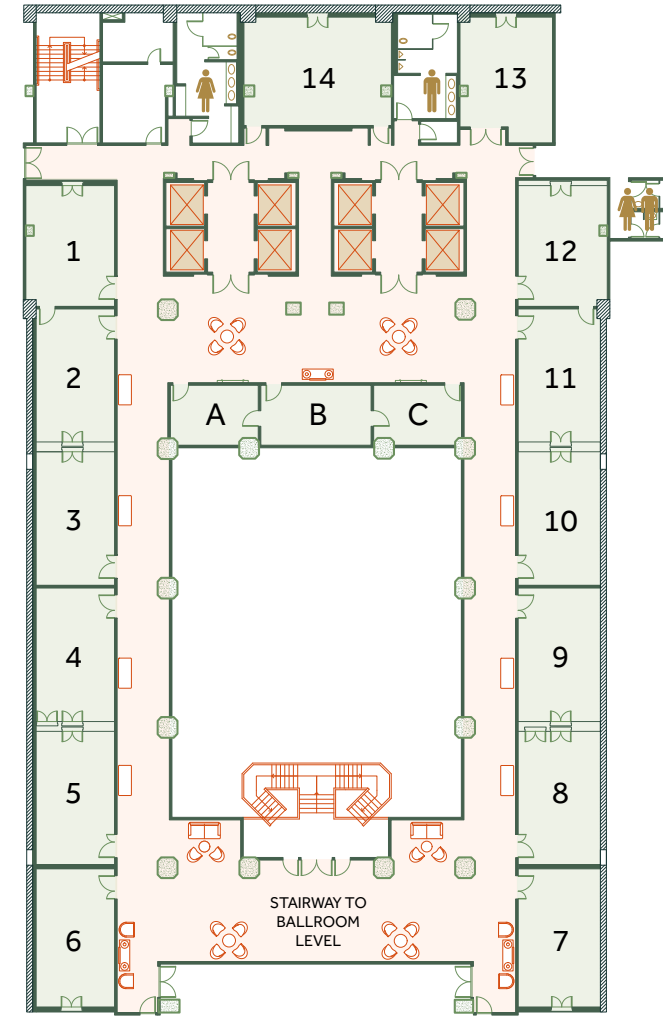
Mezzanine Training Center

14 MEETING ROOMS | 3 MEETING OFFICES | UP TO 450 GUESTS

Directly above our expansive ballroom level, a dedicated floor presents space for breakouts and breakthroughs. Suitable for in-depth workshops, strategic huddles, and intimate trainings, rows of meeting rooms frame a cluster of offices at its core. Natural textures and gentle blues ripple throughout, instilling a spirit of connection and forward fluidity for individual meetings and integrated events that make waves.



Scan for a 3D walkthrough of the training center.



ROOM	DIMENSIONS L X W	SQUARE FEET	CEILING HEIGHT	THEATRE	CLASS ROOM 2/6'	CLASS ROOM 3/6'	10/72" ROUNDS	RECEPTION	U-SHAPE	CONFERENCE	HOLLOW SQUARE
Room 1	24x17	408	7'4"	30	16	22	30	25	20	18	18
Room 2	26x15	390	7'4"	30	16	22	30	25	20	18	18
Room 3	26x15	390	7'4"	30	16	22	30	25	20	18	18
Room 4	26x15	390	7'4"	30	16	22	30	25	20	18	18
Room 5	26x15	390	7'4"	30	16	22	30	25	20	18	18
Room 6	27x15	405	7'4"	30	16	22	30	25	20	18	18
Room 7	27x15	405	7'4"	30	16	22	30	25	20	18	18
Room 8	26x15	390	7'4"	30	16	22	30	25	20	18	18
Room 9	26x15	390	7'4"	30	16	22	30	25	20	18	18
Room 10	26x15	390	7'4"	30	16	22	30	25	20	18	18
Room 11	26x15	390	7'4"	30	16	22	30	25	20	18	18
Room 12	24x17	408	7'4"	30	16	22	30	25	20	18	18
Room 13	25x18	450	7'4"	30	16	22	30	24	20	18	18
Room 14	29x21	609	7'4"	45	20	30	40	40	24	22	26
Office A	17x12	204	7'4"	Meeting Planner Offices			10	-	-	-	-
Office B	21x12	252	7'4"	Meeting Planner Offices			10	-	-	-	-
Office C	17x12	204	7'4"	Meeting Planner Offices			10	-	-	-	-

Concourse Level | Fourth Floor

Concourse Training Center

37 MEETING ROOMS | REGISTRATION AREA
EXECUTIVE BOARDROOM & ANTE ROOM | UP TO 2,600 GUESTS

Designed to flex from small group sessions to mid-sized seminars, a series of scalable meeting rooms stretches across the fourth floor. A dedicated registration desk serves to greet and orient attendees, and at the center, an Executive Boardroom and an Ante Room accommodate C-suite and pre-event briefings. Neutral tones, continuous lighting, and smooth pillars create a canvas for collaborations of all kinds.



Scan for a 3D walkthrough of the training center.



ROOM	DIMENSIONS LXW	SQUARE FEET	CEILING HEIGHT	THEATRE	CLASS ROOM 2/6'	CLASS ROOM 3/6'	10/72" ROUNDS	RECEPTION	U-SHAPE	CONFERENCE	HOLLOW SQUARE
Avila	38x53	2,014	7'6"	130	70	100	100	150	36	36	38
Avila-A	38x29	1,102	7'6"	70	30	42	50	75	24	22	26
Avila-B	38x24	912	7'6"	60	30	42	50	75	24	22	26
Balboa-A	26x15	390	7'6"	30	16	18	20	25	20	18	18
Balboa-B	26x15	390	7'6"	30	16	18	20	25	20	18	18
Balboa-C	28x15	420	7'6"	30	16	18	20	25	20	18	18
Capistrano	32x52	1,664	7'6"	120	70	80	100	150	34	40	38
Capistrano-A	32x28	896	7'6"	60	28	40	50	75	24	22	26
Capistrano-B	32x24	768	7'6"	60	28	40	50	75	24	22	26
Carmel	38x26	988	7'6"	70	30	45	50	75	26	22	26
Coronado	25x25	625	7'6"	50	20	30	30	30	20	18	22
El Capitan	42x51	2,142	7'6"	130	70	100	100	150	36	36	38
El Capitan-A	42x23	966	7'6"	65	32	46	50	75	24	22	26
El Capitan-B	42x28	1,176	7'6"	65	32	46	60	75	26	24	28
Huntington	32x79	2,528	7'6"	240	86	130	160	200	44	52	48
Huntington-A	32x25	800	7'6"	74	30	42	40	70	24	22	26
Huntington-B	32x31	992	7'6"	84	34	48	50	75	26	24	30
Huntington-C	32x23	736	7'6"	73	30	42	40	70	24	22	26
La Jolla	25x24	600	7'6"	50	20	30	30	30	20	18	22
Laguna	32x80	2,560	7'6"	240	86	120	120	200	44	52	48
Laguna-A	32x56	1,792	7'6"	130	70	90	90	150	38	46	40
Laguna-B	32x24	768	7'6"	60	20	30	30	40	24	24	26
Lido-A	26x15	390	7'6"	30	16	18	20	25	20	18	18
Lido-B	26x15	390	7'6"	30	16	18	20	25	20	18	18
Lido-C	28x15	420	7'6"	30	16	18	20	25	20	18	18
Malibu	45x26	1,170	7'6"	100	52	78	50	90	26	30	28
Manhattan	32x27	864	7'6"	80	28	40	50	75	24	22	26
Monterey	29x26	754	7'6"	60	28	40	40	60	22	20	26
Oceanside	33x27	891	7'6"	70	30	42	50	75	24	22	26
Palisades	55x32	1,760	7'6"	80	30	42	60	80	20	18	26
Palos Verdes	32x53	1,696	7'6"	120	70	80	100	150	34	36	38
Palos Verdes-A	32x29	928	7'6"	65	28	40	50	75	24	22	26
Palos Verdes-B	32x24	768	7'6"	65	28	40	50	75	24	22	26
Redondo	32x26	832	7'6"	70	28	40	50	75	24	22	26
Salinas	28x18	504	7'6"	64	22	32	30	40	20	18	20
San Clemente	33x26	858	7'6"	70	30	42	50	75	24	22	26
San Simeon	38x52	1,976	7'6"	130	70	100	100	150	36	36	38
San Simeon-A	38x28	1,064	7'6"	70	28	40	50	75	24	22	26
San Simeon-B	38x24	912	7'6"	60	28	40	50	75	24	22	26
Santa Barbara	25x16	400	7'6"	30	16	18	20	25	20	18	18
Santa Monica	44x23	1,012	7'6"	100	52	78	50	90	26	30	28
Sunset	24x21	504	7'6"	40	22	27	30	35	16	14	20
Ventura	26x16	416	7'6"	30	16	18	20	25	20	18	18
Executive Board Room*	56 x 26	1,456	7'6"	-	-	-	-	20	-	20	-
Ante Room	28 x 19	532	7'6"	-	-	-	-	20	-	-	-

Capacities based on maximum sets; numbers may vary based on the addition of AV, staging, decor, food stations, etc.
*Existing boardroom table with 20 leather chairs

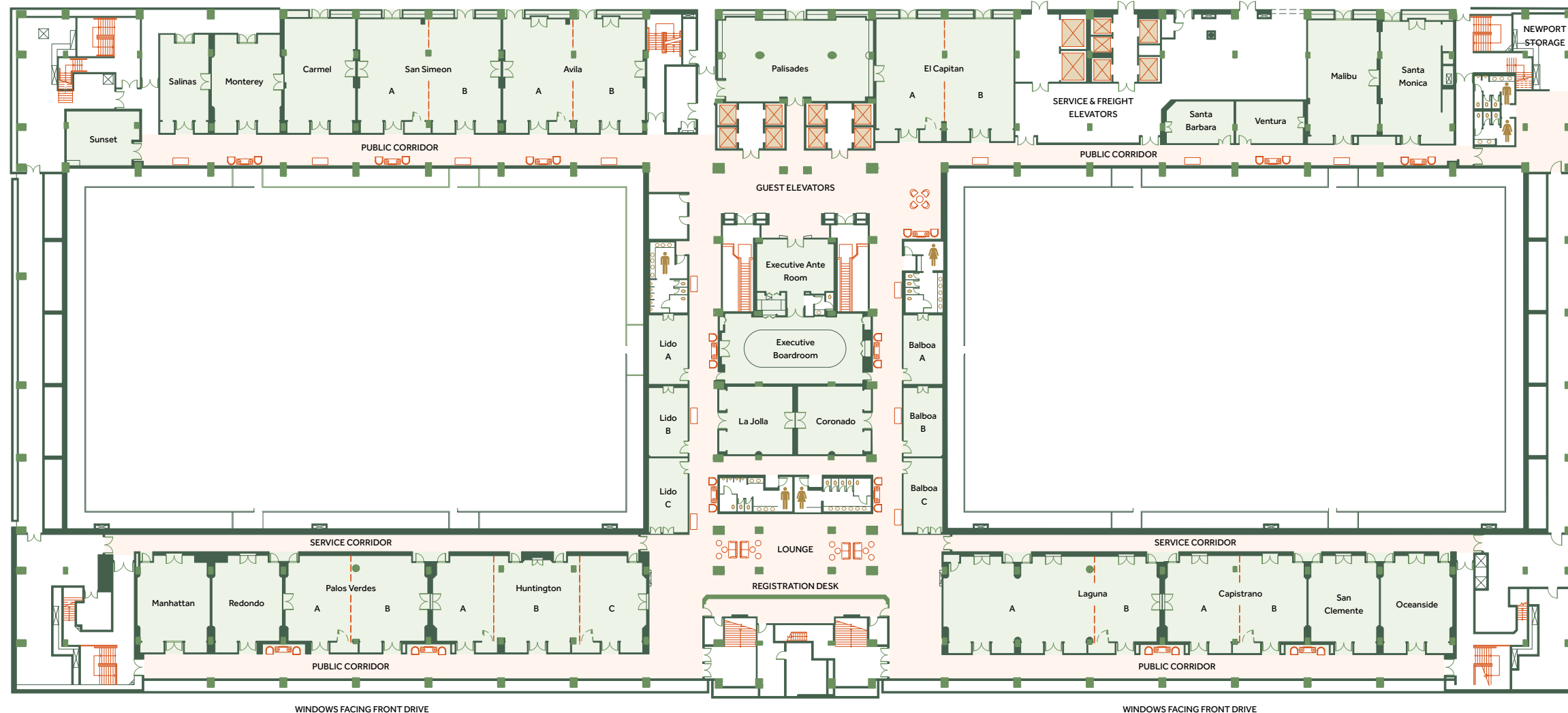
Concourse Level | Fourth Floor

Concourse Training Center

37 MEETING ROOMS | REGISTRATION AREA
EXECUTIVE BOARDROOM & ANTE ROOM | UP TO 2,600 GUESTS

Designed to flex from small group sessions to mid-sized seminars, a series of scalable meeting rooms stretches across the fourth floor. A dedicated registration desk serves to greet and orient attendees, and at the center, an Executive Boardroom and an Ante Room accommodate C-suite and pre-event briefings. Neutral tones, continuous lighting, and smooth pillars create a canvas for collaborations of all kinds.

Scan for a 3D walkthrough of the training center.



Terrace Level | Fifth Floor

Sunset Terrace

19,000 SQ FT | UP TO 900 GUESTS

Cultivating a spirit of abundance with versatile arrangements and vivid greenery, our west terrace is where visionary events and extraordinary experiences bloom. From bespoke banquets to sunset ceremonies that give way to lively celebrations, opportunity is always on the horizon.

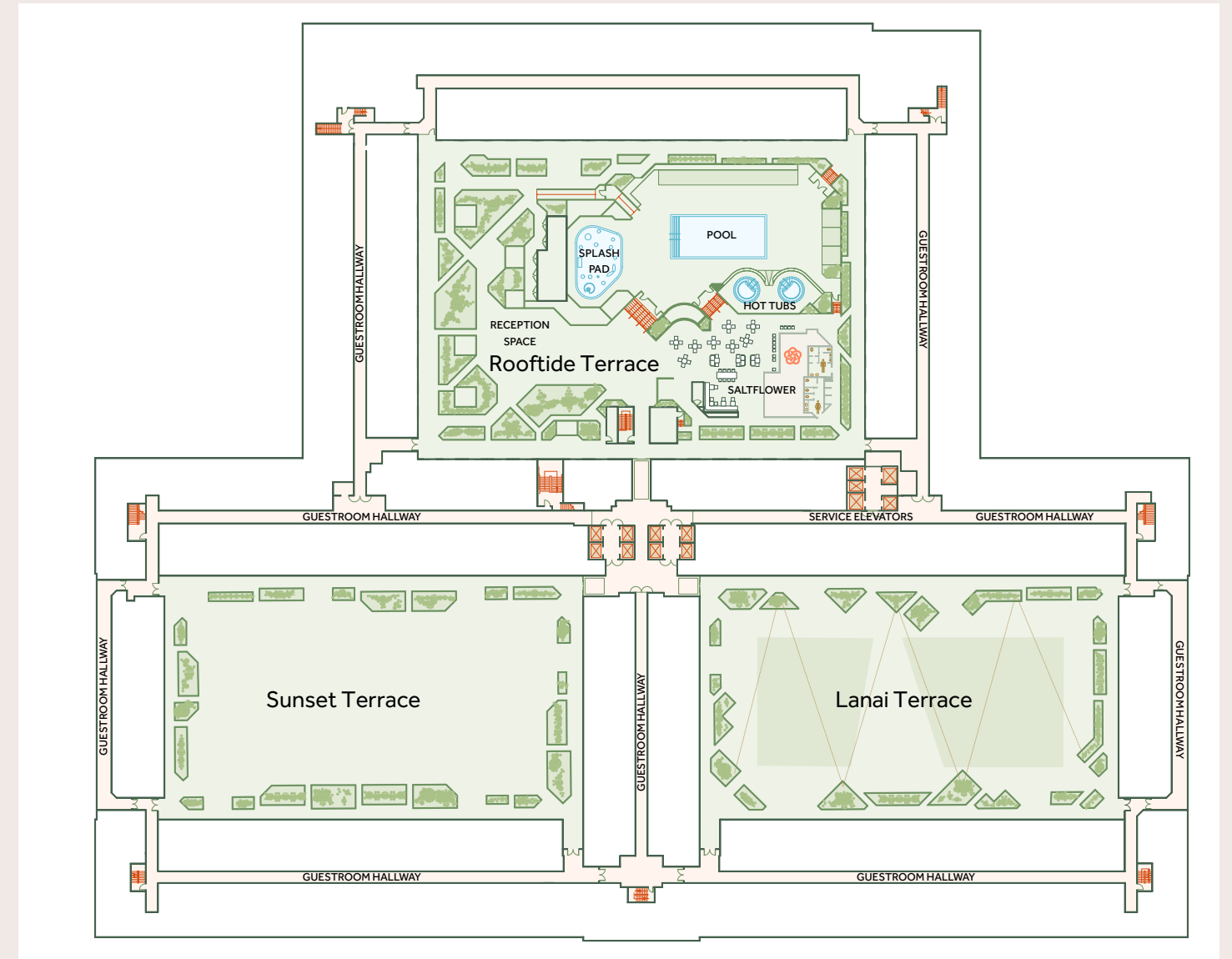
Lanai Terrace

19,000 SQ FT | UP TO 900 GUESTS

Bathed in the soft glow of the morning sun, every event on our east terrace brims with the promise of a new day. Flourishing plants and flexible seating punctuate the spacious deck, adding an air of energy to an environment where creative banquets and themed parties thrive.



Scan for a 3D walkthrough of outdoor terraces.



SPACE	DIMENSIONS L X W	SQUARE FEET	10 / 72" ROUNDS	RECEPTION
Sunset/Lanai Terrace	108x176	19,000	600	900
Rooftide Terrace	Pool Lawn	900	-	100

Rooftide Terrace

900 SQ FT | UP TO 100 GUESTS

Designed with space for connection, relaxation, entertainment, and play, our hotel's outdoor living room transforms into a festive venue for mid-sized get-togethers and gatherings, complete with a reception area, outdoor games, and Saltflower Social Kitchen.

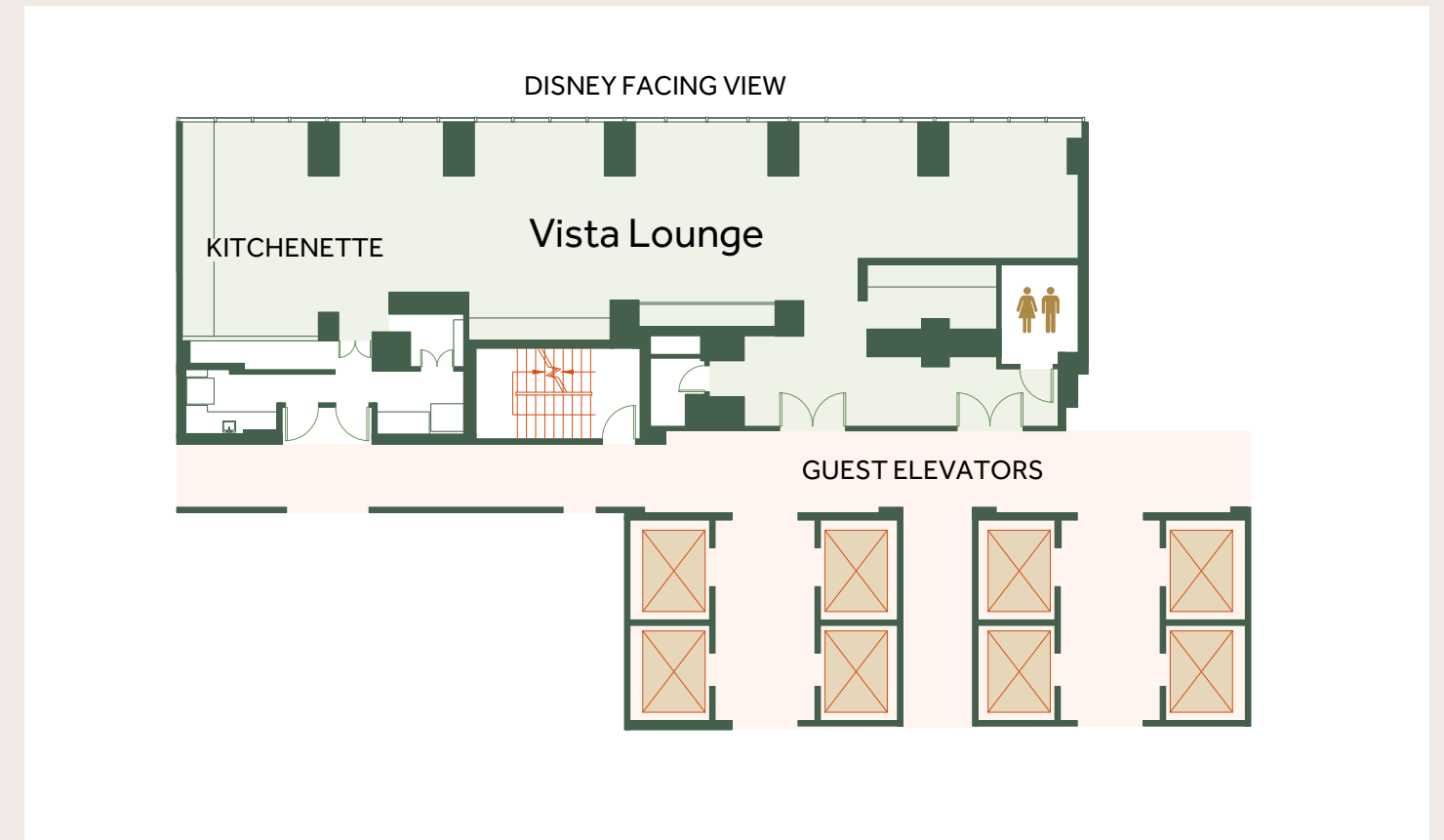


Overlook Level | Fourteenth Floor

Vista Lounge

1,106 SQ FT | KITCHENETTE | UP TO 75 GUESTS

Above it all, our top-floor venue offers an exclusive setting for special events and special occasions. Views of nightly fireworks make Vista Lounge ideal for intimate gatherings that impress, from VIP networking and reception after-parties to birthday celebrations, bridal showers, and anniversary events.



SPACE	SQUARE FEET	CEILING HEIGHT	60" BANQUET	RECEPTION	CONFERENCE
Vista Lounge	1,106	9'	40	75	20

Scan for a 3D walkthrough of the lounge.





Exceptional events, extraordinary ease

Transform the space you need into the experience you envision with Hilton Anaheim's robust infrastructure, advanced capabilities, and expert support.

High-impact productions

CHANDELIERS & RIGGING

Soaring 19-foot ceilings in our Pacific and California Ballrooms, coupled with 72 rigging points in each, provide unparalleled flexibility for dramatic lighting, custom décor, and elaborate stage productions. Our promenades offer a versatile 12'6" clearance for more intimate events.

LOADING & ACCESS

Accommodating trucks up to 53 feet, our four-bay, height-adjustable loading dock ensures effortless load-in and set-up. Two large freight elevators, built for wide items and heavy loads, additional service elevators, and service corridors provide seamless access to venues.

SCREENS & STAGING

20' x 15' electric drop-down screens in Pacific & California Ballrooms provide a professional backdrop for presentations and multimedia. Flexible, portable staging, available in 6' x 8' sections and heights of 16", 24" or 32"—makes custom configurations easy.

Seamless connectivity & support

POWER & IT

Robust power capabilities, including 25-60 amp/3-phase connections, support even the most demanding productions. High-speed Internet, with burstable bandwidth up to 1GB, ensures seamless connectivity for attendees and presenters. On-site IT provides expert support.

AUDIO-VISUAL EXPERTISE

Our exclusive in-house partner, Encore provides comprehensive audio-visual (AV) solutions, from sound and lighting to rigging and internet. Their on-site presence ensures seamless execution and expert guidance throughout your event.

DEDICATED PARTNER

As your single point of contact for technical needs, Encore handles rigging. From suspended motors and audio to trussing and lighting, Encore ensures the safety and stability of all overhead installations.

Creative flexibility

VENUE CUSTOMIZATION

From portable dance floors to flexible staging, lighting, and seating configurations, we offer a range of customizable elements to bring your vision to life. Our team works with you to tailor each detail, ensuring the venue is perfectly designed to your needs.

BRANDED SIGNAGE

Flexible in design and grand in scale, Hilton Anaheim's entries, columns, walls, and floors become your canvas for event signage and wraps that enhance immersion. Conveniently located on site, FedEx Office handles all your custom printing needs.

VENUE EXPANSION

In addition to our scalable venues, events at Hilton Anaheim have the option of flowing next door into Anaheim Convention Center's Grand Plaza—a 100,000-square-foot open-air space featuring date palms, orange trees, and a striking "River of Lights."



Inspire your next big moment

Connect with our team of seasoned experts to energize your event at the OC's largest and most eventful hotel.



Hilton Anaheim Meetings & Events

Tom Rooney

DIRECTOR OF SALES
tom.rooney@hilton.com
+1 714 740 4234

Ian Norton

DIRECTOR OF GROUP SALES
ian.norton@hilton.com
+1 714 740 4249

Julie Carter, CMP, CTA

DIRECTOR OF
EVENTS & CATERING
julie.carter@hilton.com
+1 714 740 4262

Janice Bernard, CMP, CTA

ASSOCIATE DIRECTOR OF
EVENTS & CATERING
janice.bernard@hilton.com
+1 714 740 4280

Partner Service Vendors

FedEx Office

PRINT & SHIP CENTER
usa5624@fedex.com
+1 714 621 0028

Encore

TECHNOLOGY SERVICES
hiltonanaheim@encoreglobal.com
+1 714 750 4321 ext. 4473

Hilton®

ANAHEIM

This document and all content herein is for internal use only by Hilton Anaheim and those affiliated with Hilton Anaheim and shall not be shown or provided to the public.