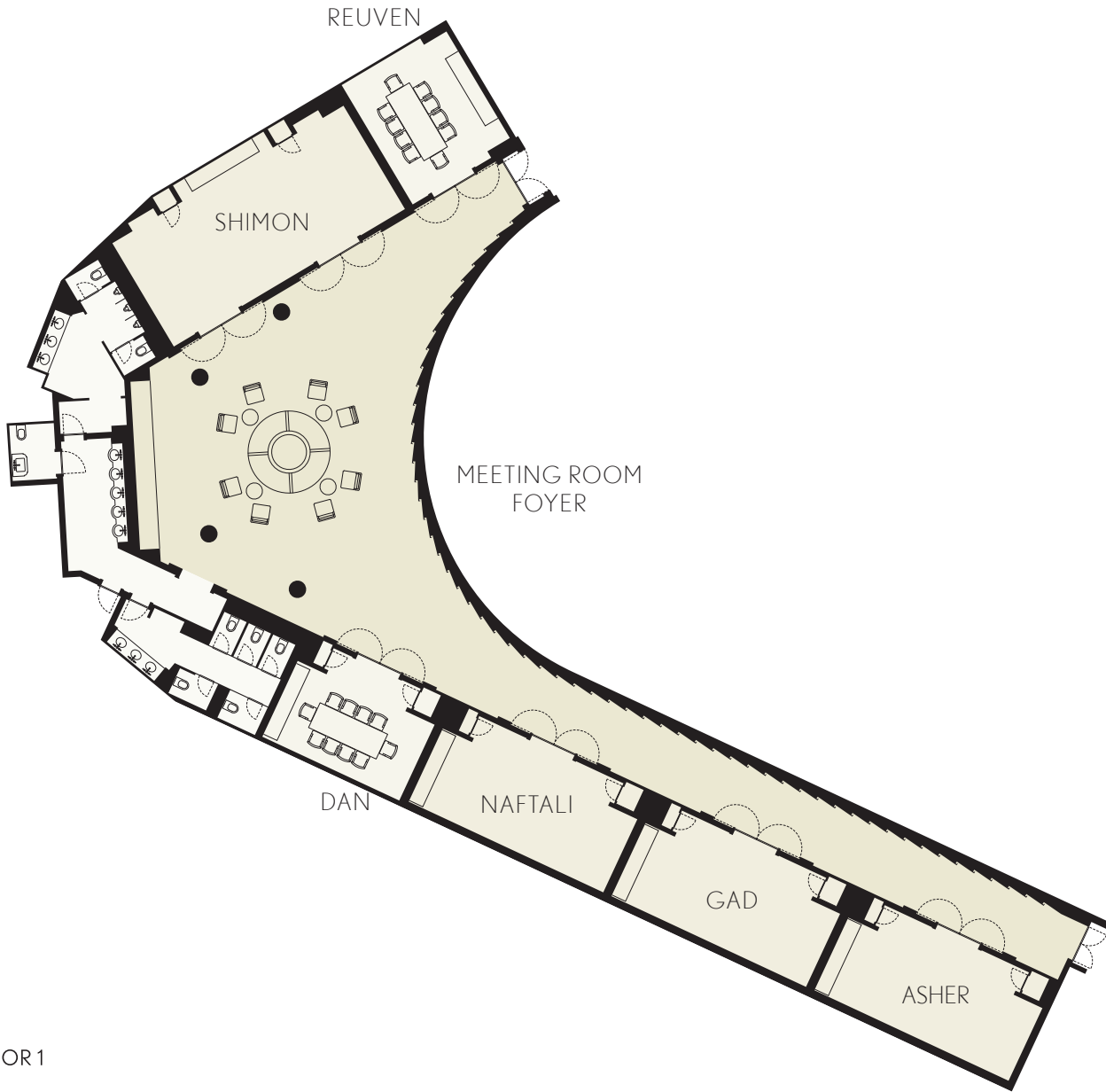




WALDORF ASTORIA®  
JERUSALEM

# FLOOR PLANS

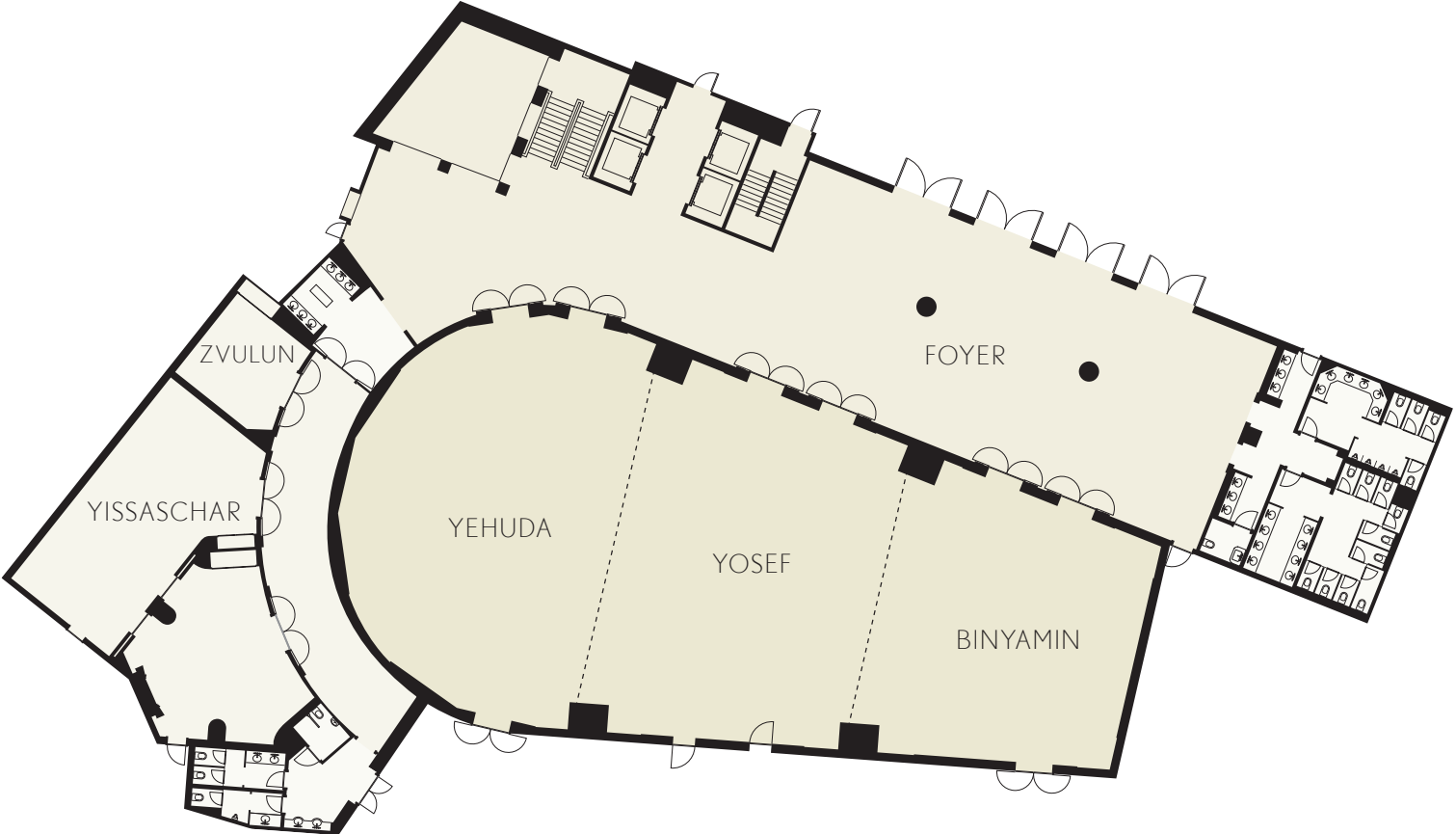
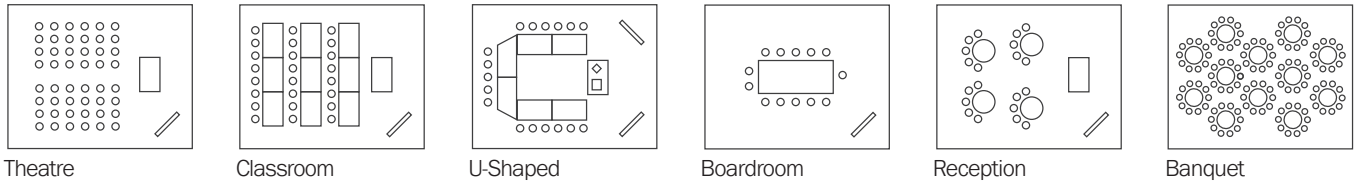


FLOOR 1

|              | Theatre | Classroom | U-Shape | Boardroom | Reception | Banquet | Dimensions (ft) |                 | Ceiling Height<br>ft | Dimensions (m) |                | Ceiling Height<br>m |
|--------------|---------|-----------|---------|-----------|-----------|---------|-----------------|-----------------|----------------------|----------------|----------------|---------------------|
|              |         |           |         |           |           |         | w x l           | ft <sup>2</sup> |                      | w x l          | m <sup>2</sup> |                     |
| Reuven       | 0       | 0         | 0       | 10        | 0         | 0       | 16 x 16         | 290             | 9.84                 | 5 x 5          | 27             | 3                   |
| Shimon       | 40      | 30        | 27      | 32        | 40        | 30      | 16 x 36         | 613             | 9.84                 | 5 x 11         | 57             | 3                   |
| Dan          | 0       | 0         | 0       | 10        | 0         | 0       | 14 x 19         | 280             | 9.84                 | 4.5 x 6        | 26             | 3                   |
| Naftali      | 30      | 18        | 21      | 22        | 25        | 20      | 13 x 27         | 398             | 9.84                 | 4 x 8.5        | 37             | 3                   |
| Gad          | 30      | 18        | 21      | 22        | 25        | 20      | 13 x 27         | 382             | 9.84                 | 4 x 8.5        | 35.5           | 3                   |
| Asher        | 30      | 18        | 21      | 22        | 25        | 20      | 13 x 27         | 382             | 9.84                 | 4 x 8.5        | 35.5           | 3                   |
| Terrace Roof | 0       | 0         | 0       | 0         | 300       | 0       | 32 x 98         | 3229            | -                    | 10 x 30        | 300            | -                   |

\*Numbers are approximate - amounts may vary due to special setup requests.

# CONFERENCES & EVENTS CONFIGURATIONS



## FLOOR 2

|                                    | Theatre | Classroom | U-Shape | Boardroom | Reception | Banquet | Dimensions (ft) |                 | Ceiling Height<br>ft | Dimensions (m) |                | Ceiling Height<br>m |
|------------------------------------|---------|-----------|---------|-----------|-----------|---------|-----------------|-----------------|----------------------|----------------|----------------|---------------------|
|                                    |         |           |         |           |           |         | w x l           | ft <sup>2</sup> |                      | w x l          | m <sup>2</sup> |                     |
| Yehuda (1/3 of Ballroom)           | 170     | 120       | 50      | 36        | 98        | 180     | 65 x 45         | 3078            | 20                   | 20 x 14        | 286            | 6                   |
| Yosef (1/3 of Ballroom)            | 200     | 135       | 50      | 44        | 120       | 160     | 59 x 45         | 2615            | 20                   | 18 x 14        | 243            | 6                   |
| Binyamin (1/3 of Ballroom)         | 130     | 70        | 40      | 36        | 80        | 100     | 45 x 45         | 2023            | 20                   | 14 x 14        | 188            | 6                   |
| Yehuda & Yosef (2/3 of Ballroom)   | 400     | 250       | 100     | 75        | 240       | 300     | 59 x 92         | 5699            | 20                   | 18 x 28        | 529            | 6                   |
| Yosef & Binyamin (2/3 of Ballroom) | 320     | 250       | 100     | 75        | 240       | 280     | 52 x 92         | 4639            | 20                   | 16 x 28        | 431            | 6                   |
| Grand Ballroom                     | 600     | 350       | 150     | 112       | 400       | 500     | 59 x 137        | 7717            | 20                   | 18 x 42        | 717            | 6                   |
| Foyer                              | -       | -         | -       | -         | -         | -       | 36 x 114        | 3024            | 20                   | 11 x 35        | 281            | 6                   |
| Zvulun                             | 15      | 12        | 6       | 10        | 7         | 10      | 16 x 16         | 290             | 10                   | 5 x 5          | 27             | 3                   |
| Yissaschar                         | 70      | 32        | 40      | 40        | 35        | 40      | 22 x 42         | 925             | 10                   | 7 x 13         | 86             | 3                   |

\*Numbers are approximate - amounts may vary due to special setup requests.